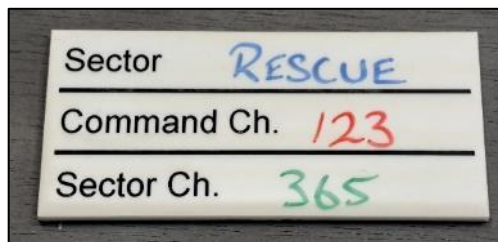


Additional Items

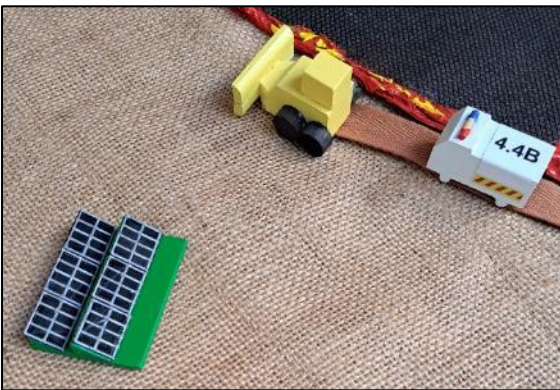
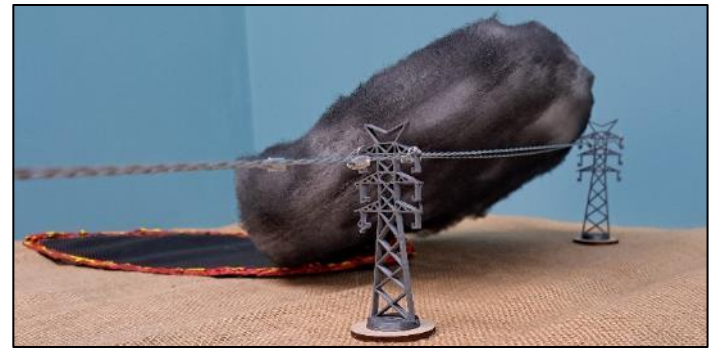
These items are examples of items that have been custom-made on request. They are available to be included in orders.

| Item |
|---|
| Building - prison |
| Campsite |
| Community Warnings (Bushfire) |
| Communication Panel – functional sector |
| Deep sand / bogged appliance |
| Fire - spot fires (no wind) set of 3 |
| Fire - spot fires (wind) set of 3 |
| Fire shape - flexible |
| Fire shape – wind driven edge |
| Fire Danger Rating boards (set of 4) |
| Firefighter icon tile – drip torch ignition |
| Firefighter rake hoe trail |
| Harvester |
| Hose (60mm scaled as a 10m collector) |
| Hose (60mm scaled as a 30m hose) |



| Item |
|---|
| Landscape Mat – Larger (2.4m x 1.6m) |
| Landscape Mat – Remote Area |
| Landscape Mat – Riverine |
| Lightning bolt (large) |
| Low Fuel Area (fabric and tag) |
| Plantation – Eucalypt |
| Plantation - Pine |
| Rangers Station |
| Refuse site (general waste) |
| Refuse site (general & green waste) |
| Sector name (Charlie, Delta, Papa & Quebec) |
| Salt lakes (set of 6) |
| SES truck |
| SES utility |
| SES trailer |
| Solar Farm |
| Tractor & plough |
| Train & carriages (goods train) |
| Train – electric |
| Transmission tower (500 kVA) |
| Power lines (set of 4 - longer to suit 500 kVA) |
| Trigger Point |
| Walk trail |
| Water bomber drop - gel |
| Water pump with suction & delivery hoses |
| Wind turbine |



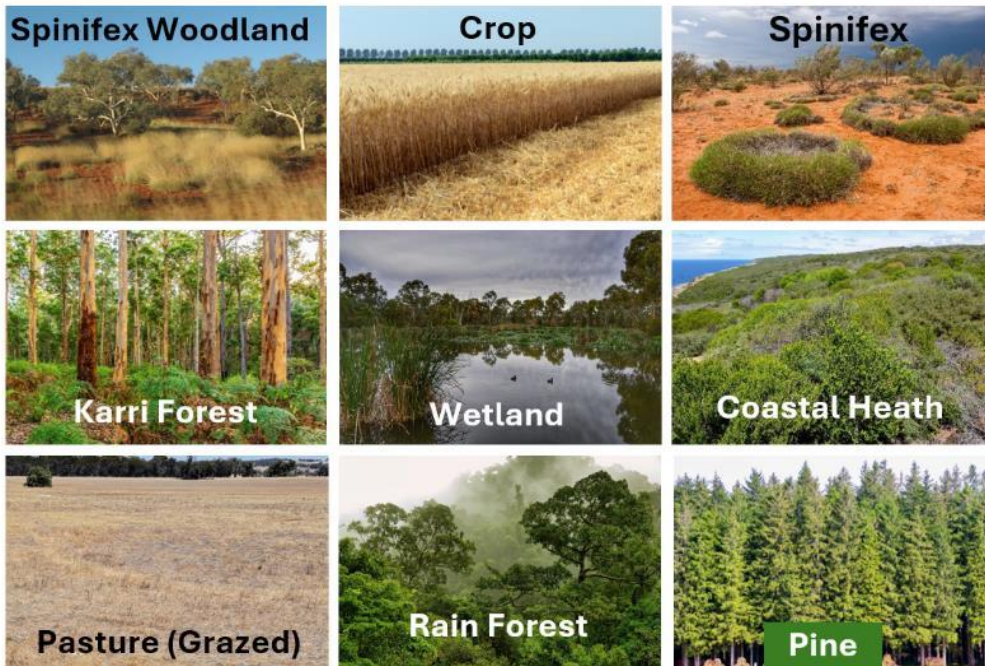


Fuel cards

\$5 each - includes gst

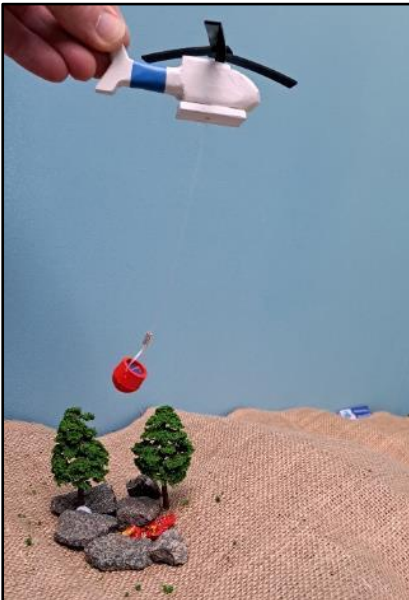
High-quality photos (matt finish) on 3mm white acrylic approx. 50 x 80mm.

| Item | |
|---------------------|--------------------|
| Crop | Rain Forest |
| Pasture (Natural) | Chenopod Shrubland |
| Pasture (Grazed) | Wetland |
| Pasture (Eaten out) | Coastal Heath |
| Acacia Woodland | Button Grass |
| Banksia Woodland | Pine |
| Eucalyptus Woodland | Spinifex |
| Savanna Woodland | Mallee |
| Spinifex Woodland | Grassland |
| Karri Forest (WA) | Shrubland |
| Jarrah Forest (WA) | |



Aviation

| Item |
|--|
| Air Attack Supervisor - fixed wing |
| Air Attack Supervisor - rotary wing |
| Helicopter & Bambi Bucket |
| Helicopter with aerial incendiary (capsules) |
| Helicopter with aerial incendiary (drip torch) |
| Helitak - Blackhawk |
| Large Air Tanker & retardant drop |
| Drone |
| Drone - incendiary |



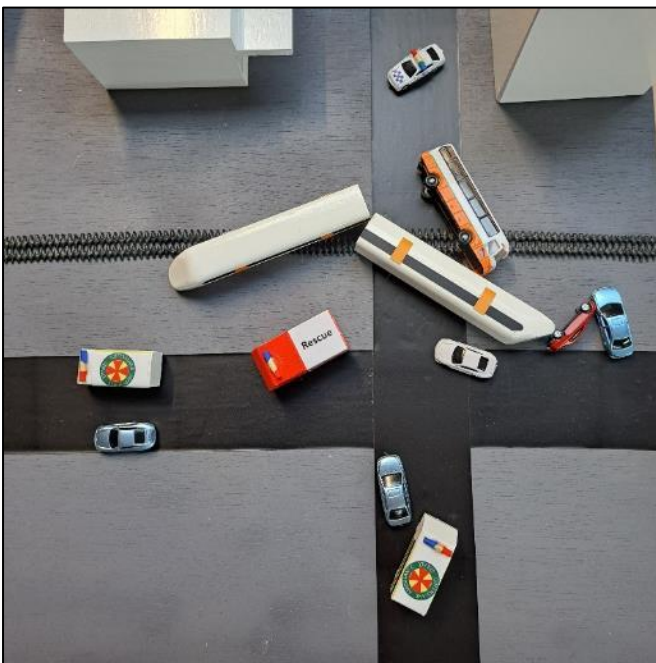
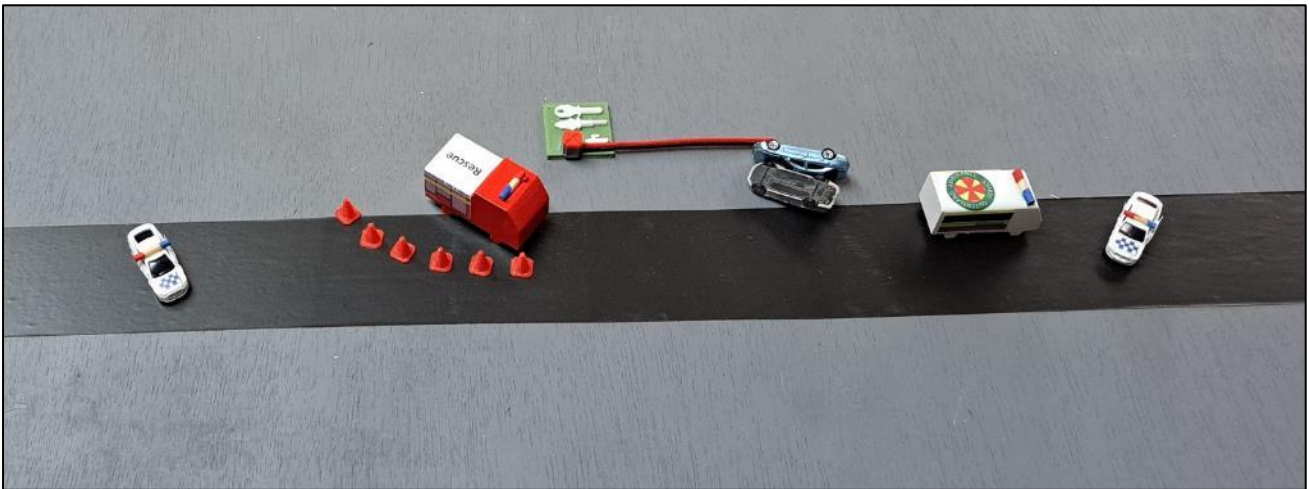
HAZMAT

| Item |
|---|
| Bulk storage tank (2 x yellow) |
| Bunding (earth bund) |
| Casualty (3 – 1 x red, 1 x yellow, 1 x orange) |
| Chemical drum |
| Chemical drum – leaking |
| Chemical 1,000 litre IBC Container |
| Demarcation lines – hot, warm & cold zones |
| Demarcation lines – plume/threat zones (red, orange & yellow) |
| Gas / vapour cloud |
| Plume |
| Spill – Liquid, single product small |
| Spill – Liquid, single product medium |
| Spill – Liquid, single product large |
| Spill – Liquid, two products mixing |
| Spill – Liquid, off-gassing |
| Spill – Powder / granules |
| Truck (Four Axle Rigid) |
| Wind direction arrow (small blue) |



Rescue

| Item |
|-------------------------------|
| Car Vs House |
| Casualty |
| Helicopter - rescue |
| Rescue tools on salvage sheet |
| Road cones |
| Tree & separate base |



Bushfire Model

Sharing Firefighting Knowledge

bushfiremodel.com.au

